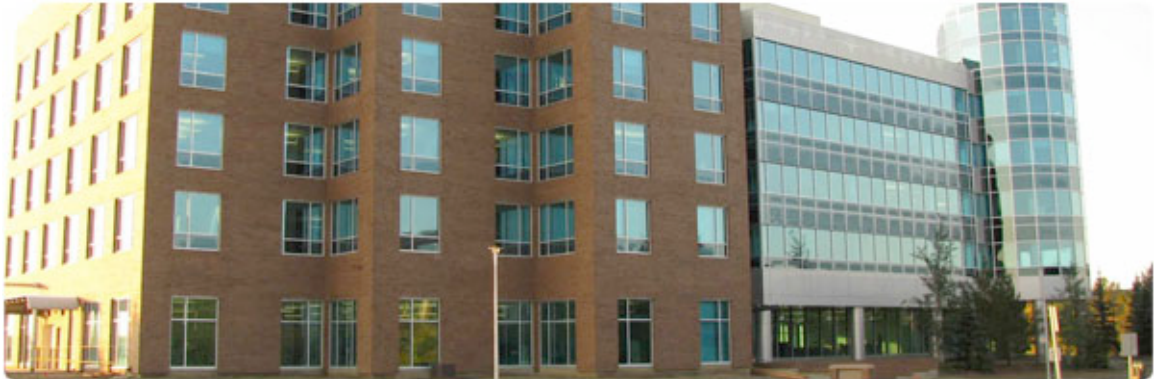


Innovation Place Research Park, Saskatoon



Murray Guy (Principal of Integrated Designs) was hired by Innovation Place as a Project Manager. With a background and interest in control systems and energy management, Murray advised Innovation Place to reduce their expenses by changing their building standard to a more sustainable, energy-conscious one. This standard has evolved to building all new facilities to Leadership in Energy and Environmental Design Standards, with the seventh in the program using 55% less energy than the current standard for very little, if any, additional cost.

IDI works in collaboration with Innovation Place implementing a seven facility high performance building program including 3 buildings in Saskatoon, 3 at the Regina Research Park and one in Prince Albert.

IDI's partnership with Innovation Place has spanned 10 years and continues on new projects

IDI has participated at various levels of involvement for project management, design facilitation, control system design, LEED certification and energy modeling for research park projects.

- Saskatchewan Forest Centre – Saskatchewan's first LEED registered project

- 116 Research Drive – first building in Innovation Place’s Advanced Building Design Program
- 421 Downey Road – one of the first of many radiant cooling building projects
- 121 Research Drive – radiant heating and cooling, low thermally transmitting curtainwall, and heat recovery technology are all prevalent
- Petroleum Technology Research Centre - first research facility to be built to an energy efficiency C2000 standard in Canada
- Terrace Building – NRCan building of the year award in 2003
- 2 Research Drive – LEED facilitation